

# FIRST ADVANCED MAN. COMPANY



**ALU STEEL**

فرع شركة التقدم الأول للصناعة



## ▶ ABOUT US

**First Advanced company** was established in 1957 - AD, with the approval of the Saudi Ministry of Commerce and Industry. The company is located in the Industrial Area in Riyadh on an 8,000 M building area and comprises about 160 employees.

First Advanced company is a pioneer in the field of fabrication work, from extruded aluminum profiles (i.e., windows, doors, shop frontages, curtain walls and structural systems). The factory was established to meet the entire need for such a specialized aluminum industry in the area to support the construction boom that took place during the past two decades. It is our great honor to have shared in establishing projects in K.S.A, where you can see our skilled workmanship almost everywhere.

Our factory is keen to abide by the ISO specifications. As a result. We reach a high grade of quality in production, designing and installation, thanks to our expert executives, designers, engineers and technicians, in addition to using equipment and machines with high quality and specifications.

First Advanced company is distinguished in producing aluminum

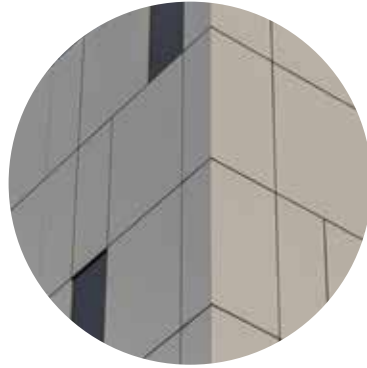
w windows, curtain wall, structural glazing, doors, gates, glass frontages, handrails, light balustrade, safety grill systems, fences, and furniture. These products are available in a variety of' wonderful shapes to symbolize our marketing motto «Our products represent a touch of creativity on your building».

# OUR WORKS INCLUDE



**GLASS WORKS**

glass facades  
stairs  
shower rooms



**CLADDING WORKS**



**Handrails Works**



**Hangars and  
umbrellas works**



**IRON GATES AND NET  
FENCING**



**LOUVRE**



**BILLBOARDS**



# GLASS WORKS

## GLASS FACADES



## STAIRS



● SHOWER ROOMS



# CLADDING WORKS





● Handrails Works



● HANGARS AND UMBRELLAS WORKS





**IRON GATES AND NET FENCING**





● LOUVRE



BILLBOARDS



# First Advanced Manufacturing Company Is Specializing For The Design Fabrication And Installation Of The Following:

Windows  
Glass Wall  
Celestial Spheres  
Facades  
Handrails  
Gates  
Entrance Main Doors  
Light Posts

Skylight  
Decorative Cladding  
Fences  
Curtain Wall  
Structural Glazing Systems  
Louvers  
Canopies  
Bullet Proof







**AS EXAMPLES OF  
OUR BUSINESS FOR  
SOME SUCCESS  
PARTNERS**

## Cladding works and bulletproof glass at the Royal Saudi Air Base



## Cladding works at the Ministry of Defense portal



**Cladding works, glass facades, and iron works, Arkan Square Mall in Dammam, Al-Yamamah Company**



**Cladding works, glass facades, and skylight**





## The wall of King Abdullah Park in Riyadh



## Glass facades, canopy and automatic doors. Lulu Hypermarket, Ali Bin Abi Talib Road



## Electrical room works





## Cloud doors for hangers and iron stairs





## sasco paintings



## Cladding works and glass facades in Arkan Sport Industrial







**K.S.A - Riyadh 11353 - P.O.Box87**  
**Steel Factory: Riyadh - Industrial Area - Area 8,000 M2**  
**Aluminum Factory: Al Kharj- Industrial Area - Area 10,000 M2**  
**Email: [info@alusteel-ksa.com](mailto:info@alusteel-ksa.com)**  
**Telephone: (011)4954450**  
**Mobile: 0500646139 - 0560286431**  
**Sales Rep. Mobile: 0591480167**